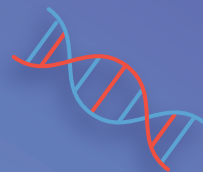




MOREHEAD
PLANETARIUM+
SCIENCE CENTER



SPARKING CURIOSITY 2024



Scholarships
Available,
see Pg. 5



Summer Science Camps for Grades K-8

Astronomy, chemistry, engineering, and more!

2024 Camps

Young investigators will take an unforgettable science adventure with experiences for even the most curious minds. Through hands-on engaging activities, campers will learn about evolving technology, environmental preservation, chemistry, engineering, astronomy, and more!



CHOOSE YOUR CAMPS

Use the information in this camp guide and on our website to choose the camps that match your child's school grade level in Fall 2024 and your child's interests.



REGISTER ONLINE

Go to <https://moreheadplanetarium.org/program/camps/>.

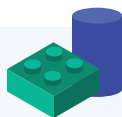
When registration opens, you will be able to register through our website.



SUBMIT REQUIRED CAMP FORMS*

After you register online, please complete the waivers and forms, including submitting immunization records for each camper.

Constructed Creations



Pyramids, bridges, arches and towers—humans have built them all and in this camp, you will too! We will investigate the shapes and structures all around us, learn how major monuments were made, and apply those skills to design and build our own city!

Dig It!

Discover the treasures beneath your feet! Acting as geologists, "Fossil Finders" campers discover how rocks form. As paleontologists, they unearth fossils, and as biologists, they search for life underground. This camp really "rocks!"



Magic Tree House Explorers®



Like Jack and Annie, young campers will enter the Magic Tree House® for an exciting space mission. We will explore and learn about the International Space Station, visit a real live observatory, and take a closer look at the Moon in this exciting camp. Daily story time will be an important part of this Magic Tree House® journey!

The Air Up There

Everyone has probably seen something flying through our skies. But what kinds of things can fly through the air and who made important discoveries about flight? We will answer these questions and more as we learn all about the science behind flight. Students will create, experiment with, and fly their own inventions every day.



LABracadabra

In the morning, campers will harness their inner magician as we explore the science of magic! Can you make water disappear? Can you make metal float? Learn the science behind amazing tricks and illusions and put your knowledge to the test as you prepare a science magic show. You'll be on your way to becoming a Morehead magician as fast as you can say LABracadabra!

In the afternoon, campers will explore how your brain controls everything you do. Learn about how important your brain is as you journey inside the body's command center! Optical illusions, mazes and even ice cream sundaes will help demonstrate how the brain controls your senses, actions, thoughts and moods. Along the way, we might even discover how to boost your brain power!



Magic Tree House Inventors

How many stars are in the starry night sky? If we flew to the Sun, how long would we fly? Will we travel to planets, and will it be soon? Will we ever be able to live on the Moon? How does it feel to journey through space? And why is our Earth so special a place? Discover the answers to these and more Magic Tree House riddles about astronomy and space science!

What toys use magnets? How do Frisbees fly? In the afternoon, campers will explore these questions and more as they use Newton's laws of motion to create toy cars, make their own circuits and experiment with flight. At the end of the week, campers will put on their hard hats and create their own toy inventions.



Interstellar Explorers

Blast off to adventure! In the morning, through hands-on activities and visits to the GSK Full dome Theater, campers explore gravity, fusion and the life cycle of stars. They also work together to create a "space station" where they can further explore the mysteries of space.

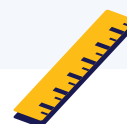
What would you do if you found yourself in an unknown land? In the afternoon, campers will learn how to navigate using compasses, GPS units, the stars and more! By the end of the week, they'll add animal observation, fire building, and teamwork to their survival skillset.



Mysteries of the Unknown

Let's spend a week exploring the mysteries of the Earth. In the morning, we will learn about atoms, molecules, acids, bases, and chemical reactions with a whole bunch of hands-on experiments! Campers will experiment with freezing points using ice cream and explore the science of fireflies by making their own glowsticks!

Humans know more about the surface of the Moon than about Earth's sea floor. In the afternoon, campers will explore the oceans by building a model submarine and taking a dive to learn how creatures use camouflage in the deep ocean. Design a new fish species and make a map of your own sea floor creations. There's an ocean of mysteries waiting to be discovered!



Campers can participate in a named camp only once during the summer. For example, a camper cannot register for "LABracadabra" more than once.

SciVentures

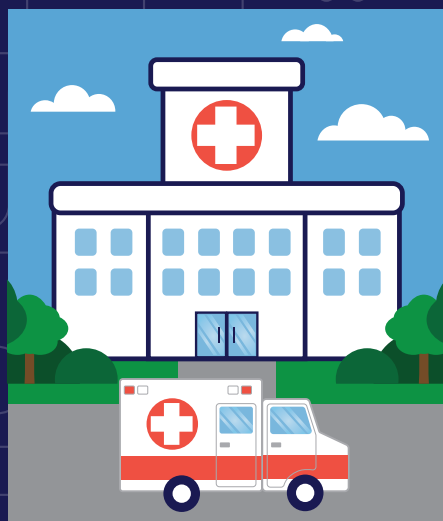
Summer Science Enrichment Program for Grades 6-8

This full-day experience gives middle schoolers the opportunity to explore fascinating real-world science themes in depth! Each week-long program combines practical lab work and fun hands-on activities, allowing your camper to envision themselves with a career in the sciences.



SciVentures: Colonizing Mars

Why haven't we been to Mars yet? In this full day experience, participants will explore the answer to this question and more, as they learn about some of the essentials for space travel and colonization. Investigate the history of space travel, build rockets, grow bacteria, test soil viability, and design a working human habitat for an alien planet in this SciVentures journey.



SciVentures: ER

Let's take a trip to the Emergency Room...only this time for fun! In this SciVentures program, young scientists explore the fast-paced world of emergency medicine. From microscopes to stethoscopes, EKGs to EEGs, diagnose cases and solve medical mysteries the way health care professionals do.

In the lab, learn basic first aid and use laboratory tools to identify microbes and pathogens. Explore UNC Hospitals and talk with the pros about what it takes to run an emergency room. Go on board an ambulance and get the inside story from emergency medical technicians. Turn on your sirens and grab your gear; Morehead's taking you to the ER!

Policies

Please refer to Morehead's camp website moreheadplanetarium.org/program/camps/ for complete details about Morehead Summer Science Camps and SciVentures, including frequently asked questions.

DATES

Concierge registration opens for Solar Level (and higher) members	Jan. 29
---	---------

Early registration opens for Morehead Family Level (and higher) members at 12 p.m.	Feb. 5
--	--------

Early registration opens for UNC faculty/staff at 12 p.m.	Feb. 9
---	--------

Public registration opens at 12 p.m.	Feb. 12
--------------------------------------	---------

Camp open house and orientation	June 4
---------------------------------	--------

K-1 SCHEDULE

Morning extended care	7:30 AM - 8:45 AM
-----------------------	-------------------

Morning drop-off	8:45 AM - 9:00
------------------	----------------

Morning camp	9:00 AM - 12:00
--------------	-----------------

Morning pickup for half-day campers	12:00 PM - 12:15
-------------------------------------	------------------

Lunch for full-day campers	12:00 PM - 1:00
----------------------------	-----------------

Afternoon drop-off for half-day campers	12:45 PM - 1:00 PM
---	--------------------

Afternoon camp	1:00 PM - 4:00 PM
----------------	-------------------

Afternoon pick-up	4:00 PM - 4:15 PM
-------------------	-------------------

Afternoon extended care	4:15 PM - 6:00 PM
-------------------------	-------------------

GRADES 2-8 SCHEDULE

Morning extended care	7:30 AM - 8:45 AM
-----------------------	-------------------

Morning drop-off	8:45 AM - 9:00 AM
------------------	-------------------

Camp Session	9:00 AM - 4:00 PM
--------------	-------------------

Afternoon pick-up	4:00 PM - 4:15 PM
-------------------	-------------------

Afternoon extended care	4:15 PM - 6:00 PM
-------------------------	-------------------

LOCATION

All camps are located at Morehead Planetarium and Science Center (250 E. Franklin St. Chapel Hill, NC) on The University of North Carolina at Chapel Hill campus.

FEES*

	Member*	Public
Half-day, one week grades K-1	\$168.30	\$187
Full-day, one week grades 2-5	\$337.50	\$375
Full-day, one week SciVentures	\$445.50	\$495
Morning extended care (per week)	\$33	
Afternoon extended care (per week)	\$38	

Full payment is required at the time of registration.

Morehead members at the Family Plus level and above receive a 10% discount on every camp session. To become a member, visit moreheadplanetarium.org/engage/membership/.

If you are a current student, staff, or faculty member of The University of North Carolina at Chapel Hill, you are eligible for a 7% discount on all camps. Only one camp discount code can be used at check out. Request more information at moreheadplanetarium@unc.edu.

*For a complete list of camp fees for 2024, please visit moreheadplanetarium.org/program/camps/camp-fees/.

REFUNDS

If you cancel your registration for a camp on or before May 13, 2024, you'll receive a refund of fees paid for that camp minus a \$50 processing fee.

If you cancel on or after May 14, 2024, you will not receive any refund for that camp. Instead, your fees (minus the processing fee) will be designated as a tax-deductible contribution to the Morehead Summer Science Camps scholarship fund.

If Morehead cancels a camp, you'll receive a full refund for that camp (including the processing fee). Morehead reserves the right to cancel a camp if enrollment is low.

SCHOLARSHIPS

Morehead is committed to providing summer opportunities regardless of financial situations. For more information, visit moreheadplanetarium.org/camps/.

Schedule

Register online at www.moreheadplanetarium.org/camps.

	GRADES K-1		GRADES 2-3
	AM	PM	FULL DAY
June 10 - 14	Dig It	The Air Up There	LABracadabra
June 17 - 21*	Magic Tree House® Explorers	Constructed Creations	Magic Tree House® Explorers Inventors
June 24 - 28	Dig It	The Air Up There	LABracadabra
July 8 - 12	Magic Tree House® Explorers	Constructed Creations	Magic Tree House® Explorers Inventors
July 22 - 26	Magic Tree House® Explorers	Constructed Creations	Magic Tree House® Explorers Inventors
July 29- Aug 2	Dig It	The Air Up There	LABracadabra
Aug 5 - 9	Magic Tree House® Explorers	Constructed Creations	Magic Tree House® Explorers Inventors

*No camp will be held on Wednesday, June 19 in observance of Juneteenth. This will be reflected in camp pricing.

GRADES 4-5	GRADES 6-8
FULL DAY	FULL DAY
Interstellar Explorers	SciVentures: ER
Mysteries of the Unknown	SciVentures: Colonizing Mars
Interstellar Explorers	SciVentures: ER
Mysteries of the Unknown	SciVentures: Colonizing Mars
Mysteries of the Unknown	SciVentures: Colonizing Mars
Interstellar Explorers	SciVentures: ER
Mysteries of the Unknown	SciVentures: Colonizing Mars

PUBLIC REGISTRATION OPENS FEB. 12



CAMP OFFICE/SCHOLARSHIPS

919-843-7334

mpsc_camps@unc.eduwww.moreheadplanetarium.org/camps/

MOREHEAD MEMBERSHIP

919-962-3300

mpscmembers@unc.eduwww.moreheadplanetarium.org/membership

VOLUNTEER PROGRAM

919-843-7334

mpsc_camps@unc.eduwww.moreheadplanetarium.org/program/camps/fb.com/moreheadplanetarium[@moreheadplanetarium](https://twitter.com/moreheadplanetarium)[@moreheadplanet](https://twitter.com/moreheadplanet)www.moreheadplanetarium.org