



# 2026 UNC Science Expo Interest Meeting



MOREHEAD  
PLANETARIUM+  
SCIENCE CENTER

The University of  
North Carolina at Chapel Hill

# Agenda

- Welcome, introductions
- What is the Science Expo?
- How can you participate?
- Next Steps
- Q&A

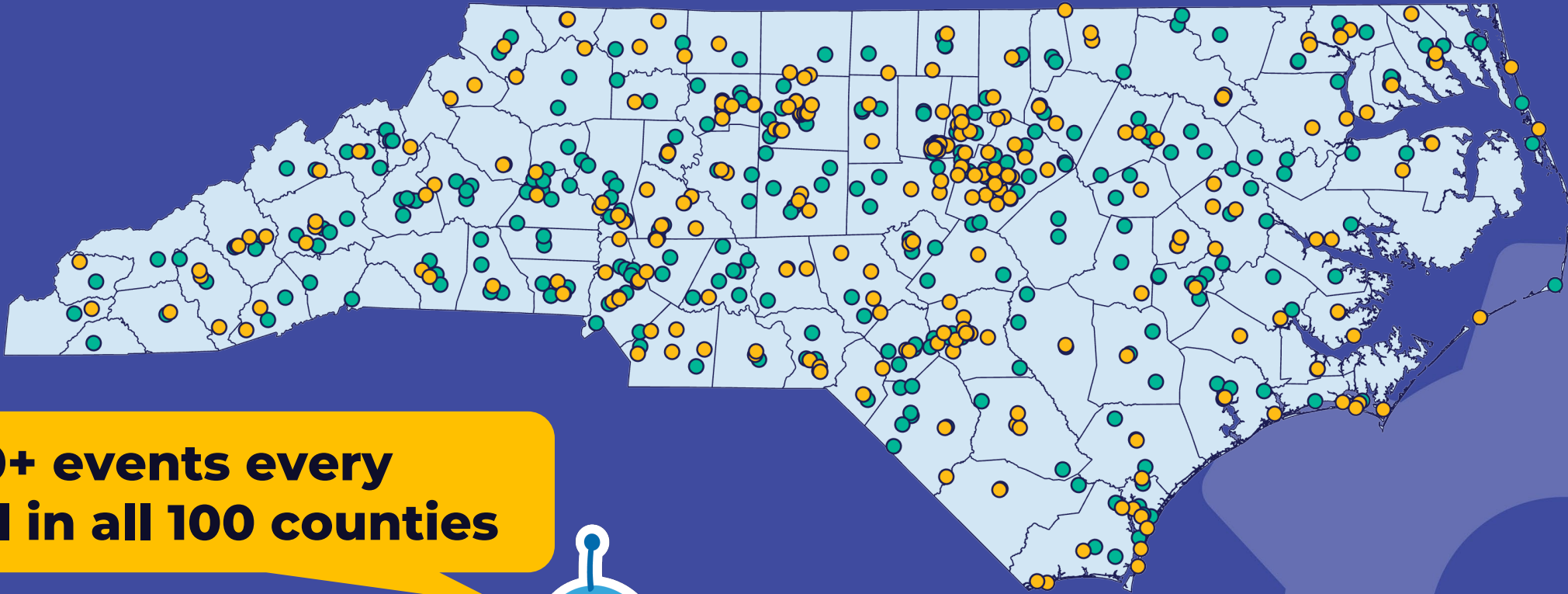


**April 11, 2026**

**[go.unc.edu/ScienceExpo](https://go.unc.edu/ScienceExpo)**

# What is the UNC Science Expo?

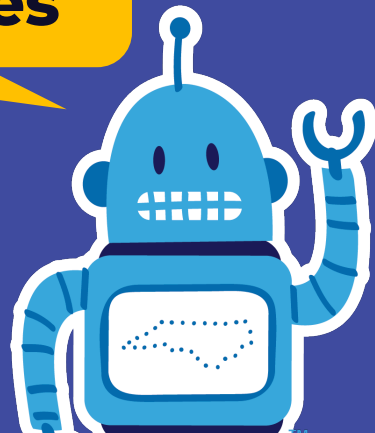
# North Carolina Science Festival



**1000+ events every  
April in all 100 counties**

**N&C  
SCIFEST**

*Presented by*  
**IRTI**  
INTERNATIONAL









# 2025 UNC Science Expo Numbers

- Attendees: 7,000+
- STEM Professionals: 602
- Organizations: 101
- Volunteers & Staff: 58
- Stage Performances: 8



E. Franklin St.

# UNC SCIENCE EXPO



2025 TITLE SPONSOR



## MAP KEY

- Accessible Parking
- Bathrooms
- Emergency Medical Services
- Exhibitors
- Exhibitor & Volunteer Area
- Food Trucks
- Info Booth
- Makerspace Tour Meetup
- Small Science
- Stage
- Unsung Founders Memorial
- Water Source

E. Cameron Ave.

N&C  
SCIFEST

# UNC Science Expo is supported by:

Office of the Chancellor

Office of the Provost

Office of the Vice Chancellor for Research

College of Arts and Sciences







# How can you participate?

# Exhibiting



- Exhibitors must provide a STEM activity or interactive component for visitors to engage with.
- Free and open to any UNC-affiliated group
- External groups can participate as Expo or NCSciFest sponsors

# Exhibiting



- NCSiFest Theme: Science Matters
- What makes a good activity?
  - What will visitors DO?

Touch	Manipulate	Build
Try	Test	Make
Model	Organize	Design

- Beware!
  - Academic posters
  - Brochures/flyers
  - Static displays/presentations



# Exhibiting - logistics



- 10'x10' covered presentation space
- 8' table, 2 chairs
  - Additional chairs, tables, and electrical access can be requested, but not guaranteed
- Exhibitors MAY NOT sell
- Parking available in nearby lots

# Stage Shows



- Science demos
- Dance
- Music
- Comedy



# Perks



- T-Shirts\*
- Coffee and bagels
- Pizza lunch
- Interactions with public

\*Subject to a cap



# Next Steps

# Next Steps



- Registration link to follow
- **Sign-up closes February 13<sup>th</sup>**
- Keep in touch – fill out web form to be added to our mailing list
- Stay tuned for workshop opportunities

# Questions?



scienceexpo@unc.edu



go.unc.edu/ScienceExpo