

Teacher's Guide 2022-2023

FIELD TRIPS on the campus of UNC-Chapel Hill
+ MOBILE PROGRAMS at your school



NEW

Experience the new
Morehead—featuring
interactive exhibits and
new digital projector!

Table of Contents

| | |
|--|-------------|
| AT MOREHEAD | 4-8 |
| Planetarium Shows | 4-6 |
| Science LIVE! | 7 |
| Enrichment Experiences | 8 |
| Launch Lab | 8 |
| AT YOUR SCHOOL | 9-11 |
| Earth & Beyond | 9 |
| Classroom Programs | 9-10 |
| Mobile Planetarium | 10 |
| Science on Stage | 11 |
| Skywatching Science Nights | 11 |
| NORTH CAROLINA SCIENCE FESTIVAL | 12 |
| PLAN YOUR VISIT WITH MOREHEAD | 13 |
| PRICING | 14 |
| FREQUENTLY ASKED QUESTIONS | 15 |

ABOUT US

Morehead Planetarium and Science Center is a unit of the University of North Carolina at Chapel Hill and is the first and largest fulldome planetarium in the south. We remain one of the premier planetarium and science centers in the country with the bold mission to serve North Carolina and beyond by bringing together the unique resources of UNC to engage the public for an improved understanding of science, technology, and health.

CONTACT

Morehead Reservations Team

📞 919-843-7993

✉️ mpsc_reservations@email.unc.edu



THE UNIVERSITY
of NORTH CAROLINA
at CHAPEL HILL

What to Expect

THE MOREHEAD EXPERIENCE

Sharing the wonder of science for more than 65 years.

Morehead knows how to bring science to life, with exciting and inspiring programs designed to engage young learners. Our programming aligns with North Carolina Essential Standards, ensuring that your field trip will enhance your classroom instruction.

Morehead Planetarium and Science Center's diverse programs offer something for everyone – both on-site and in your community.



AT MOREHEAD

Our recent renovation transformed Morehead into a full-service planetarium and museum featuring interactive exhibits and learning experiences.

With 5,000 square feet in exhibits, students can explore Morehead's place in space travel history and learn about current UNC research in the fields of astronomy, marine science, plant ecology, public health, and biomedical engineering.

Plus, experience our renovated Science LIVE! Stage and our newest addition, Launch Lab—an interactive STEM tinker space.



AT YOUR SCHOOL

Bring the Morehead experience to your school. Our goal for at-your-school programming is to provide high-quality science learning opportunities that spark students' interests and deepen their understanding of STEM, while also demonstrating future opportunities and career pathways.

Activities are specially designed to accommodate students of all ages, experiences, and learning abilities.

Planetarium Shows

AT MOREHEAD

MOREHEADPLANETARIUM.ORG/PLANETARIUM-SHOWS

GRADES
K-12

LENGTH
45 min.

MAX. PARTICIPANTS
150 people per show



Morehead planetarium shows are an exciting way to engage and inspire your students with a love of science.

Surround your students with the sights, sounds, and sensations of an extraordinary educational adventure! Each program includes a planetarium show, a question and answer session with a Morehead educator, and if time permits, a mini star tour. Some planetarium shows are available with a Spanish language audio track; if needed, please request this service one week in advance.

NEW!

THE GSK FULLDOME THEATER FEATURES A **NEW 4K DIGITAL PROJECTION SYSTEM**, ALLOWING FOR MORE CRISP AND VIVID IMAGES. WITH INCREASED CONTRAST, STUDENTS CAN SEE THE STARS AS THEY HAVE NEVER SEEN THEM BEFORE!

Now Showing



FIELD TRIP
TO MOREHEAD



MOBILE PLANETARIUM
AT YOUR SCHOOL



OPTIONAL SPANISH
AUDIO TRACK

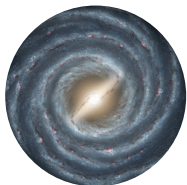


ASTRONAUT

Recommended for grades 4-5
(also suitable for grades 6-12)



Follow animated astronaut Chad and learn what it means to be an astronaut, including the physicality of launching into space and how weightlessness affects the human body.

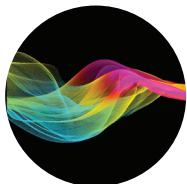


CAROLINA SKIES

Recommended for grades 3-12



This show focuses on stars, planets, and constellations in our North Carolina sky. The presentation is live, led by a Morehead educator and adapted for different grade levels, so each show is unique!



COSMIC COLORS

Recommended for grades 2-12



Discover the many reasons for color — like why the sky is blue and why Mars is red. Get ready for an amazing adventure under a rainbow of cosmic light!

Planetarium Shows, continued



DYNAMIC EARTH

Recommended for grades 6–12



Explore the inner workings of Earth's climate system. Ride on swirling ocean and wind currents, dive into the heart of a hurricane, and fly into fiery volcanoes! Available through December 31, 2022.



EARTH, MOON, AND SUN

Recommended for grades 1–4
(also suitable for grade 5)



Learn to distinguish between myths and science. Learn the basics of fusion and solar energy and why the Sun rises and sets. Examine the Moon's orbit, craters, phases, and eclipses! Produced by Morehead Planetarium.



EARTHQUAKES, VOLCANOES AND TSUNAMIS

Recommended for grades 5–12



What is going on below the Earth's surface? Our natural disasters put to bed any myth that the planet we call home is "tranquil." Experience breath-taking visualizations of major earthquakes, volcanic eruptions, and tsunamis of recent history.



GALILEO: THE POWER OF THE TELESCOPE

Recommended for grade 6
(also suitable for grades 4–12)



Travel back in time to witness the earliest experiments of Galileo Galilei. Understand how the telescope has revolutionized our understanding of the universe. Experience how one person can shape the future of science! Produced by Soref Planetarium and narrated by Dava Sobel.



THE LITTLE STAR THAT COULD

Recommended for grades K–2



Follow "Little Star," an average yellow star, in search of planets of his own to protect and warm. Along the way, meet other stars and learn what makes each star special. Created by the Saint Louis Science Center and reproduced by Audio Visual Imagineering and Brevard Community College.



THE LONGEST NIGHT

Recommended for grades 1–12



In this timeless fable of courage, generosity, and renewal, a young girl leaves her family of traveling storytellers to embark on the quest that leads her to a dragon's nest. What will she discover there, and how will it help her save a village? Produced by Morehead and featuring Paperhand Puppet Intervention.



MAGIC TREE HOUSE® SPACE MISSION

Recommended for grades K–2
(also suitable for grade 3)



Travel with Jack and Annie, stars of the Magic Tree House® best-selling children's book series, as they search for answers to a mysterious riddle they discover in a written note signed "–M." Follow them on an exciting adventure as they meet a helpful astronomer and an astronaut. Features Magic Tree House series author Mary Pope Osborne.



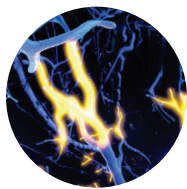
MOVING ALL AROUND

Recommended for grades K–2



This live show helps to sharpen students' observational skills while teaching them about Earth and showing them how to find objects in the night sky. The show's interactive format encourages questions and allows the Morehead educator to pace the show to the students' needs. Produced by Morehead Planetarium.

Planetarium Shows, continued



MYSTERIES OF YOUR BRAIN

Recommended for grades 5–9



Join us for an immersive and animated adventure into the human brain, zooming along the path of neurons and experiencing illusions on a grand scale, exploring how the brain works and what makes human brains so special. Produced by Morehead Planetarium.



PHANTOM OF THE UNIVERSE: THE HUNT FOR DARK MATTER

Recommended for grades 9–12



Immerse yourself in the exciting exploration of Dark Matter across space and time, speeding alongside particles before they collide in a visually stunning explosion of light and sound. Learn how scientists around the world are collaborating to track down dark matter. Narrated by Tilda Swinton with sound by an Academy Award winning team at Skywalker Sound.



SOLAR SYSTEM ODYSSEY

Recommended for grades 3 and 6
(also suitable for grades 4–8)



Animated space explorer Jack Larson and a young stowaway explore our Solar System to find a new home base for humans, investigating the icy rings of Saturn, Jupiter's volcano-ridden moon, Io, and the sub-zero methane lakes of Saturn's moon, Titan. Produced by Morehead Planetarium.¹

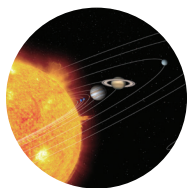


THE SUN: OUR LIVING STAR

Recommended for grades 6–12



The Sun has shone on our world for four and a half billion years. Discover the secrets of our star in this planetarium show and experience never-before-seen images of the Sun's violent surface in an immersive dome format.



SURVEYING THE SOLAR SYSTEM

Recommended for grades 3–5



This live show provides an exciting ride through our Solar System, with a closer look at Earth and several of its planetary neighbors. The show's interactive format encourages questions and allows the Morehead educator to pace the show to the students' needs.

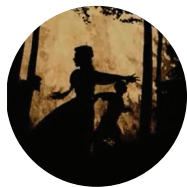


TAKE FLIGHT

Recommended for grades 3–7



Ride along with brothers Wilbur and Orville Wright for an adventure through the history of flight, from Leonardo da Vinci to Chuck Yeager. Learn about the four forces of flight and fly across the Atlantic Ocean with Amelia Earhart! Produced by Morehead Planetarium.



TALES OF THE AMERICAN SOUTH

Recommended for grades 6–12



Explore the unique stories of the American South through an innovative partnership between UNC-Chapel Hill's Center for the Study of the American South and Morehead Planetarium.



WE ARE STARS

Recommended for grades 6–12



What are we made of? Where did it all come from? Explore the secrets of our cosmic chemistry and our explosive origins. Connect life on Earth to the evolution of the Universe by following the formation of hydrogen atoms to the synthesis of carbon, and the molecules for life. Narrated by Andy Serkis.

For a detailed list of each show's correlations with NC Essential Standards for recommended grades, visit moreheadplanetarium.org/nc-standard-course-of-study

¹ The material contained in this planetarium show is based on work supported by the National Aeronautics and Space Administration (NASA) under grant award number NNX09AL78G. Any opinions, findings and conclusions or recommendations expressed in this material are those of the author and do not necessarily reflect the views of NASA.

Field Trips AT MOREHEAD

[MOREHEADPLANETARIUM.ORG/FIELD-TRIPS](https://moreheadplanetarium.org/field-trips)

Science LIVE! Programs

GRADES
K-12

LENGTH
45 min.

MAX. PARTICIPANTS
74 people per show

Live shows on Morehead's Science Stage captivate students of all ages! Each "Science LIVE!" program engages the audience and asks for volunteers to participate in exciting science demonstrations. Specific demonstrations may vary depending on grade level.

SCIENCE LIVE! ALL SYSTEMS GO

Our bodies need to be "all systems go" for us to get through each day. Join us to take an in-depth look at hair, skin, and fingernails with a digital microscope, create an electrical circuit with your body, ignite a jelly bean to demonstrate metabolism, and test reaction times of your eyes and hands.



SCIENCE LIVE! MAGNIFICENT MATTER

Matter makes up everything—it surrounds you, and can even change its appearance right before your eyes! We will learn about the states of matter, examine some tricky materials that exist between states of matter, make instant "snow," and cap it all off by observing some colorful combustions using the chemical properties of different elements.

SCIENCE LIVE! PHENOMENAL PHYSICS

In a program that Isaac Newton would have loved to attend, we will explore the fundamentals of physics through live experiments. We'll talk about forces and motion with some Carolina basketball flair, generate thousands of watts of electricity with our hair-raising Van Der Graaff generator, and do the coolest demonstration ever, literally, by observing nitrogen in two phases.

SCIENCE LIVE! SCIENCE SHOWTIME

For the very young scientists of the world (minimum age of 4 years old), we'll demonstrate some of Morehead's most exciting science experiments. Participants will learn how we experiment with different materials and see how much fun science can really be in an accessible way.

SCIENCE LIVE! UNDER PRESSURE

We put science under pressure in this program. We'll demonstrate Bernoulli's principle with a 10-foot-long bag and just your breath, demonstrate how much air weighs by crushing a can, try to burst balloons with hundreds of nails, and make a huge combustion in our "whoosh bottle."



Enrichment Experiences

GRADES
3-8

LENGTH
45 min.

MAX. PARTICIPANTS
30 students

Add an extra dimension to your visit with a hands-on, minds-on Enrichment Experience led by a Morehead educator.

ROUND AND ROUND WE GO

Recommended for grades 3-4

Get ready to move as we explore the relationship between Earth, Moon and Sun in this highly interactive and kinesthetic class. Why do we have day and night? What causes eclipses? We'll answer these questions and more as we "dance the night away."

Launch Lab

GRADES
1-12

LENGTH
45 min.

MAX. PARTICIPANTS
30 students

Learn by building and discovering in Morehead's new tinkerspace! Launch Lab programs are designed to highlight science topics through hands-on, maker-centered activities. Activities and equipment used vary with grade level.

GRASPING AT STRAWS: ROBOTIC HANDS!

Recommended for grades 1-4

Learn the basics of hand movement by using common materials to create a model hand that actually moves. Students will use straws, yarn, and cardboard to build artificial ligaments and bones and see how these things work together inside your hand.

VALVES INSIDE

Recommended for grades 3-5

Valves are all around us and inside us as well! Using a variety of materials, students will create simple types of valves, test their effectiveness, and discover research being done in the use of artificial heart valves inside the human body.



SOLAR SYSTEMATICS

Recommended for grades 3-8

What does our Solar System really look like? How do we know? In this hands-on adventure, students become NASA engineers as they design, build, and test interplanetary landers that are needed to explore rocky worlds like Mars.



LIGHT POLLUTION CIRCUITS

Recommended for grades 6-12

Light pollution affects animals, astronomers, and human health! Learn about this growing issue and what can be done to solve it by designing better streetlights and measuring equipment. Students will create simple circuits and use testing equipment to see how light can be kept on Earth where it is needed.

HIDDEN WORLDS

Recommended for grades 7-12

Researchers at UNC are actively exploring the world of the very small and studying the interactions between plants, fungi, and disease. In this class, students will create a microscope for use with a tablet or cell phone and use it to explore the world outside.

Morehead At Your School

MOBILE PROGRAMS

MOREHEADPLANETARIUM.ORG/AT-YOUR-SCHOOL

Morehead's Mobile Programs deliver science directly to your school. Our outreach educators specialize in bringing fun and engaging science activities, designed to accommodate grade levels, learning styles, classroom settings, and group sizes.



Earth & Beyond

In this Morehead program, students participate in standards-aligned lessons that explore earth science and astronomy concepts. You can choose between a Mobile Planetarium visit, a classroom program, or both. In the classroom, students experience exciting astronomy visualizations, explore moon phases and light, learn to map planetary surfaces, hunt for exoplanets, and much more! The Mobile Planetarium brings our immersive planetarium shows directly to your school.

THE EARTH & BEYOND PROGRAM OFFERS 3 CHOICES FOR YOUR SCHOOL:

☐ Classroom Program

☐ Mobile Planetarium

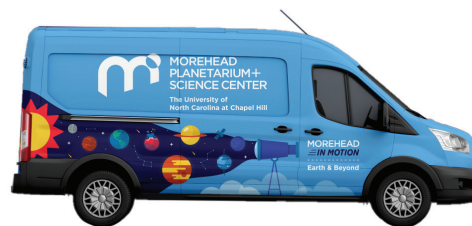
☐ Classroom Program +
Mobile Planetarium

Classroom Programs:

GRADES
K-12

LENGTH
60-75 min.

MAX. PARTICIPANTS
25 students per session



A YEAR OF WEATHER

Recommended for grades K-2

Have you ever wondered how clouds and rain are formed in the Spring? How can wind blow the leaves from the trees in Autumn? How does water change into delicate snowflakes and hazardous ice in Winter? A Year of Weather helps students visualize the fascinating and varied changes in our atmosphere throughout the seasons. *Pair this lesson with one of the following mobile planetarium shows: Magic Tree House; Moving All Around; Earth, Moon, and Sun.*

SPACE OBSERVERS

Recommended for grades K-2

How do people observe objects that are far away? Students will practice their observational skills to compare how the views we see are different when we use our eyes and when we use tools like a telescope and binoculars. *Pair this lesson with one of the following Mobile Planetarium shows: Magic Tree House; Moving All Around; Earth, Moon, and Sun.*

Earth & Beyond: Classroom Programs, continued

SOLAR SYSTEM EXPLORATION

Recommended for grades 3–5

Have you ever wondered what scientists look for when we explore other planets? What features do we use to help classify things in our solar system? What in the world happened to Pluto?!?! Explore these concepts and more through hands-on activities and visualizations to classify objects in our solar system, indirectly map a planet's surface, and help solve an inter-planetary mystery. *Pair this lesson with one of the following mobile planetarium shows: Earth, Moon, and Sun; Solar System Odyssey.*

CLIMATE TRACKERS

Recommended for grades 6–8

What is the difference between climate and weather? What is climate change? How do we track the cycling of water and gases in our own atmosphere? This activity will help students connect with the global concept of climate while using meteorological models and NASA visualizations to track the vital signs of our planet — including carbon released into the atmosphere. *Pair this lesson with one of the following Mobile Planetarium shows: Dynamic Earth ²; Solar System Odyssey.*

EXOPLANET HUNTERS

Recommended for grades 6–8

Is there another planet like Earth out there? Are there other solar systems besides our own? How can we see things that are so far away? Students will tackle these questions using NASA data and visualizations and will explore some of the thousands of planets outside of our own solar system. Classifying these otherworldly planets can help us

gain better insight into planet formation and some of the mysteries of our own Solar System. *Pair this program with the Mobile Planetarium show: Solar System Odyssey.*

LIGHT & THE ELECTROMAGNETIC SPECTRUM

Recommended for grades 9–12

How are we able to look so far back into space and time? How does light travel and how do we capture it? How does this journey inform our knowledge of the universe? Where do black holes lead? Students will explore how the Hubble Space Telescope, the recently debuted James Webb Space Telescope, and other observatories use the electromagnetic spectrum to give us a brighter picture of the matter and structure of the universe. Through exploration of wavelengths, students will understand how beautiful astronomical images come to life. *Pair this lesson with one of the following Mobile Planetarium shows: Moving All Around; Surveying the Solar System.*

OCEAN ACIDIFICATION & CLIMATE CHANGE

Recommended for grades 9–12

How does human activity affect our oceans and seas? How do scientists measure changes in the health of the ocean? How does this affect us in North Carolina? As future scientists, students will perform pH assessment to learn about ocean acidification and use NASA Earth Science data to track the potential path for rising sea levels. *Pair this program with the Mobile Planetarium show: Dynamic Earth ².*

²*Dynamic Earth* is available for viewing until December 31, 2022.

Earth & Beyond: Mobile Planetarium

GRADES
K–12

LENGTH
45 min.

MAX. PARTICIPANTS
20–30 students per session

Morehead's Mobile Planetarium delivers our unique fulldome theater experience to your school with an inflatable dome, a digital projection system, and an inventory of shows to serve all grade levels. Combined Mobile Planetarium/classroom visits offer planetarium shows paired by topics to reinforce program curricula. See planetarium shows (pages 4–6).



Science on Stage

ASSEMBLY-STYLE

Recommended for grades K-12, 45 minutes

Get your students excited about science! Science on Stage's assembly-style format will captivate participants with interactive experiments and demonstrations performed by a Morehead educator in the school's gym, auditorium, or outdoor stage.

Students will investigate force and motion, experiment with phase changes and chemical reactions, and explore other topics to support and supplement classroom learning.

Program content is customized by grade level.



Skywatching Science Nights

OUTDOOR

Recommended for grades K-12

NEW!

Schools can now explore space science with hands-on astronomy activities and telescope demonstrations at community events designed for teachers, students, and families. Topics and curriculum will be determined by celestial news and highlights.

Sample activities include safe solar observation, learning the mechanics of a telescope (with the opportunity to look through telescopes), moon exploration with binoculars, and interactive activities for all ages to enjoy.

North Carolina Science Festival

APPLY FOR NCSCIFEST PROGRAMS AT [NCSCIFEST.ORG/EDUCATORS](https://ncscifest.org/educators)



The North Carolina Science Festival—founded by Morehead in 2010—is a statewide, month-long celebration of science that takes place every April. Hundreds of fun (and usually free) public events will be listed on the NCSciFest website in mid-February.

Educators are vital to the North Carolina Science Festival’s mission—we thank you for everything you do and encourage you to participate in the NCSciFest with your students. The NCSciFest offers “at-your-site” educational programs specifically for K-12 schools.

DUKE ENERGY SCIENCE NIGHTS

Grades K–5

Funding from the Duke Energy Foundation allows NCSciFest staff to produce STEM activities and resource kits for use by elementary schools across the state. This program is designed to help you host a fun science event for your students and their families with the use of a kit that includes hands-on activities aligned with NC Science Essential Standards, a planning guide, activity instructions, materials for up to 200 participants, and the support of NCSciFest staff.

The Duke Energy Foundation sponsorship funds a number of kits to award at no charge. These are awarded to schools using an application process that includes a review of school need, demographics, geography, and past participation.

Kits can be purchased and sponsorship applications open starting in August. Schools hold their family science night during April, bringing families together as a community to explore and experiment.

Learn more about kit contents, application details, and program timeline at ncscifest.org/desn

SCIMATCH

Grades 6–8

The NCSciFest team recruits dynamic and dedicated scientists from diverse backgrounds to share their excitement about science with middle school students. SciMatch pairs middle school teachers with these scientists to schedule classroom visits to speak about their backgrounds and research, answer questions about their careers, and engage your students in a fun, hands-on activity. This program is designed to inspire students to consider science as a career.

Applications open in August. Visits are scheduled during April and are offered virtually or in-person. Learn more at ncscifest.org/scimatch



PUBLIC EVENTS

All ages

The NCSciFest team and our network of partners across the state produce hundreds of amazing STEM events for public and K-12 audiences each April. The calendar of events goes live on February 14. Find events near you at ncscifest.org

Plan Your Visit with Morehead

CHOOSE THE EXPERIENCES YOU WANT FOR YOUR MOREHEAD FIELD TRIP:

FIELD TRIPS TO MOREHEAD

Choose the experience(s) you want for your Morehead field trip.

- ☐ Watch a planetarium show in Morehead's fulldome theater (see pages 4-6)
- ☐ Participate in a Science LIVE! demonstration program (see page 7)
- ☐ Practice hands-on skills in an enrichment experience (see page 8)
- ☐ Learn by creating in a Launch Lab program (see page 8)

Choose the dates for your Morehead science experiences — a first choice, a second choice, and a third choice. Morehead will strive to accommodate your selection, but cannot guarantee availability.

Decide how your group will travel to Morehead.

Submit a field trip reservation form online at moreheadplanetarium.org/field-trips

MOREHEAD AT YOUR SCHOOL

Choose the experience(s) you want for your Morehead mobile visit.

- ☐ Practice hands-on skills with our Earth & Beyond Classroom Programs (see pages 9-10)
- ☐ Explore the stars and science in a fulldome experience with the Mobile Planetarium (see page 10)
- ☐ Experience a live demonstration with Science on Stage (see page 11)
- ☐ Invite your community to a school Skywatching event (see page 11)

Decide how your school will accommodate a visit from a Morehead mobile program.

Consider which dates your school would not be able to accommodate a Morehead visit.

Based on your response, our outreach team will offer you a selection of potential dates.

Each At-Your-School program has its own reservation form. Find them online at moreheadplanetarium.org/at-your-school

DONE!

You should receive an email notice that we have received your request within 15 minutes of submitting the form. A Morehead reservations specialist will contact you to confirm the details and discuss any special requests you may have.

Pricing

| AT MOREHEAD | Planetarium Show, Enrichment Experience*, Launch Lab*, or Science LIVE! Program | | |
|--|---|-------------------------------|---------------|
| | | Student fee | Adult fee |
| | First show or class | \$10.50, Students and Seniors | \$12.50/Adult |
| | Additional show or class | \$4, Students and Seniors | \$5/Adult |
| *Adults aren't charged for Enrichment Experience classes or Launch Lab | | | |

| AT YOUR SCHOOL | Earth & Beyond | Daily Rate ¹ | Max. Sessions per Day | Max. participants | Session length |
|----------------|--|-------------------------|-----------------------|-----------------------|----------------|
| | Classroom Program | \$420 | 3 | 30 | 45-90 min. |
| | Mobile Planetarium | \$495 | 4 | 30/24/20 ² | 45 min. |
| | Classroom + Mobile Planetarium | \$630 | 2/2 | 30/24/20 ² | 1.5-2 hrs |
| | Science on Stage | | | | |
| | One-day school visit with assembly demonstrations only | \$445 | 3 | 150 | 60 min. |
| | Skywatching Science Nights** | | | | |
| | One-day school visit | \$585 ³ | 1 | 200 | 1-2 hrs |
| | **Limited to within 90 miles of Chapel Hill | | | | |

| TRAVEL FEES ⁴ | Sites more than 90 miles from Chapel Hill: | \$10 per mile |
|--------------------------|--|---------------|
| | Reservations requiring overnight stay: (most visits over 90 miles will require an overnight stay fee) | \$190 per day |

[MOREHEADPLANETARIUM.ORG/PRICING](https://moreheadplanetarium.org/pricing)

¹ Fee for visits within 90-mile radius of Chapel Hill.

² Mobile Planetarium occupancy is dependent on grade level.

³ Non-profit/School rate.

⁴ Distances are calculated with the Google Maps application.



Frequently Asked Questions


Do your programs line up with my curriculum?

Our grade level recommendations for each program and planetarium show are based on NC Essential Standards correlations. We also deem shows suitable for varying grade levels based on age group. Please visit Morehead's website for a detailed list of each program's correlations with NC Essential Standards.

My students are studying science topics that aren't covered by your current programs. Can you still help us?

If you have a special curriculum need for your school or afterschool program, please let us know! Morehead is continually expanding its program choices, and our educators may be able to help you meet special needs.

Are your programs available in different languages?

All Morehead programs are available in English. Some planetarium shows are also available with audio tracks in Spanish. (Look for the  icon on the planetarium show listings, pages 4-6.) Please request this service at the time you make your reservation.

Are your programs accessible to persons with disabilities?

At Morehead, the GSK Fulldome Theater and Science Stage are both accessible by ramp and offer assistive listening devices. Before each visit, mobile program educators will work with teachers to ensure the learning experience supports their students' needs. Please contact Morehead's reservations team at 919-843-7993 or mpsc_reservations@email.unc.edu for additional information.

Can each person pay individually?

To offer group pricing, Morehead requires a single payment by check or credit card (MasterCard, Discover, or Visa) from the school. You will receive an invoice in advance, confirming the total participants and the amount due. For a field trip at Morehead, payment is due 3 business days prior to your visit. For a mobile visit at your school, payment is due two weeks in advance.

May a charter operator make arrangements for our field trip?

Morehead policy requires that we communicate directly with an official representative of the school.

If a third party (charter operator, travel agent, other trip planner) who is not a school employee makes arrangements for a field trip, the third party is responsible for payment of the full invoiced total for the reservation.

What are the requirements for the Mobile Planetarium?

To accommodate the Mobile Planetarium, you must have a site with these requirements:

1. Quiet, indoor room (if the Mobile Planetarium will be in a gym or play space, please arrange for other activities to be moved outside or to another location)
2. Minimum clear floor space of 30 feet by 30 feet
3. Minimum ceiling height of 13 feet with no obstructions (hanging light fixtures, fans, etc.)
4. Two grounded 120-volt standard electric outlets, clean swept floor, and adjustable lighting, if possible
5. Air conditioning for visits occurring May-September

The Mobile Planetarium can accommodate wheelchairs and one teacher must accompany the students inside.

MORE QUESTIONS

VISIT OUR WEBSITE:

[MOREHEADPLANETARIUM.ORG/FIELD-TRIP-FAQS](https://moreheadplanetarium.org/field-trip-faqs)

OR CALL OUR RESERVATIONS TEAM: 919-843-7993

OR EMAIL US: [MPSC_RESERVATIONS@EMAIL.UNC.EDU](mailto:mpsc_reservations@email.unc.edu)



Scholarships

Morehead's mission is to spread science education throughout the state of North Carolina. Through the help of our generous donors, we can offer scholarships for field trips and mobile outreach visits to your area!

Your school may qualify for scholarship assistance. You will have the option to request scholarship funding when you complete your online reservation form.



MOREHEAD PLANETARIUM+ SCIENCE CENTER

THE UNIVERSITY OF NORTH CAROLINA AT CHAPEL HILL
250 EAST FRANKLIN STREET | CB #3480
CHAPEL HILL, NC 27599-3480

Nonprofit Org
US Postage
PAID
Permit 177
Chapel Hill, NC

Explore the Stars Science Kits

Recommended grades 2-7

AVAILABLE IN ENGLISH AND SPANISH

Are you ready to explore the stars? New for this year, Morehead is offering bilingual Explore the Stars kits! We've created an easy-to-use kit that includes a bilingual storybook, online resources, and 4 hands-on activities:

- Moon Phases
- Sundial
- Spectroscope
- Star Finder

Kit request forms will open September 6, 2022 and remain open while supplies last. Kits will be shipped out Fall 2022. Learn more and fill out the request form by going to moreheadplanetarium.org/explora-las-estrellas



fb.com/moreheadplanetarium



@moreheadplanetarium



@moreheadplanet

www.moreheadplanetarium.org